

PLAYING THE SOPRANO RECORDER

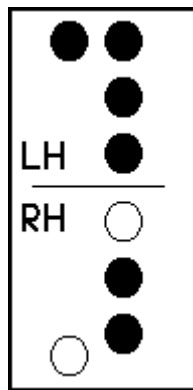
A Soprano Recorder Music Method

LESSON IX

TECHNIQUE AND FINGERING

New Note—“F Sharp” (F#)

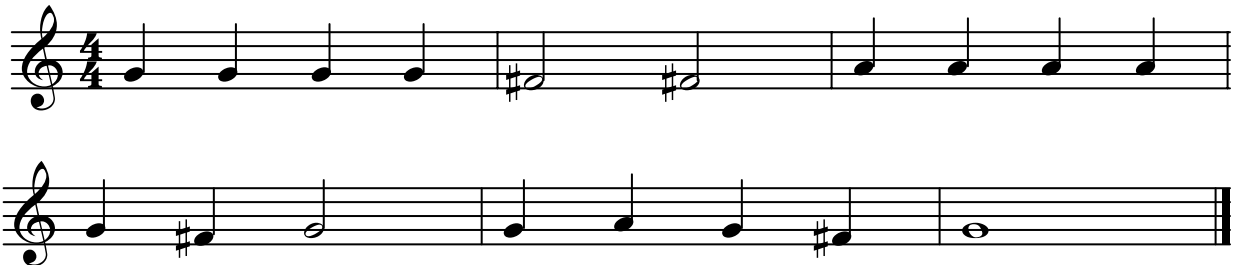
F Sharp



A sharp sign (#) placed to the left of a note on the staff raises the tone one half step. A “sharped” note has its own fingering. The most commonly sharped note is “F” sharp.

Find the fingering for “F#” on your recorder. Practice Exercise #18a.

Exercise #18a



Practice Exercise #18b. Can you find the small difference between #18a and #18b? In the second measure of #18b only the first “F” is marked as sharp. The rule in writing music is: if a note is marked with a sharp sign, repetitions of that note within the same measure will also be

sharped. The second half note in measure #2 of Exercise #18b is still sharped, however, it is not necessary to mark it as sharp.

Exercise #18b



MUSIC LESSON

Key Signature

Another name for a # is an accidental. An accidental either raises or lowers a tone. When a sharp is placed on the “F” line of the staff at the beginning of the piece, all “F’s” in the piece are sharped. This is referred to as the “key signature.” The “key signature” of Exercise #18c is one sharp. The word "allegro" appears at the beginning of the exercise. Allegro (ah-**leg**-grow) is the Italian word for fast and lively. Practice Exercise #18c. Be sure to observe the “key signature” and be sure to play the exercise fast and lively.

Exercise #18c



Another Italian term is *Da capo al Fine*. When this term, or abbreviated term (*D.C. al Fine*) appears in the music, it is an indication to go back to the beginning, repeating the music until the word “fine” occurs in the music. *Da capo al Fine* literally means: “Go to the head until you reach the finish.” The piece *Reminiscent of an Old Dance* contains a *D.C. al Fine*.

LESSON IX PIECES

Nearer My God To Thee

Words by Sarah F. Adams

Music by Lowell Mason
Arr. by Lois Veenhoven Guderian

The musical score for 'Nearer My God To Thee' is presented in six staves of music. The key signature is one sharp (F#) and the time signature is 6/4. The piece begins with a mezzo-piano (*mp*) dynamic. The first staff contains the first six measures, followed by a second staff with the next six measures. The third staff starts with a mezzo-forte (*mf*) dynamic, covers measures 12-18, and includes a mezzo-piano (*mp*) dynamic marking at the end. The fourth staff continues with measures 18-24. The fifth staff begins with a piano (*p*) dynamic and covers measures 24-30. The final staff concludes the piece with a pianissimo (*pp*) dynamic and ends with a double bar line.

Reminiscent of an Old Dance

By Lois Veenhoven Guderian

Musical score for 'Reminiscent of an Old Dance' in G major, 2/4 time. The score consists of four staves of music. The first staff begins with a dynamic marking of *mf*. The second staff contains a repeat sign and is marked *p* and *fine*. The third staff is marked *f*. The fourth staff is marked *p* and ends with the instruction *D.C. al fine*.

CREATIVE CORNER

Play the following piece on your recorder. Should this piece have a D.C. al Fine? If so, where should the D.C. al Fine be placed in the music? Write the D.C. al Fine where you think it should go.

Musical score for the Creative Corner exercise in G major, 2/4 time, marked *Allegro*. The score consists of two staves of music. The first staff contains a sequence of eighth and quarter notes. The second staff contains a sequence of eighth and quarter notes, ending with a double bar line.

THEORY AND TERMS FROM LESSON IX

Sharp (#) — A sharp (#) sign raises a tone one half step.

Accidental — An accidental raises or lowers a tone one half step.

Key Signature — The key signature of a piece signifies the sharps or flats of the piece.

Allegro — Italian for fast and lively.

D.C. al fine — Go back to the beginning until the “fine” or finish of the piece.

ASSIGNMENT

1. Study and memorize the theory and terms from Lesson IX.
2. Practice the Pieces of Lesson IX: *Nearer My God to Thee* and *Reminiscent of An Old Dance*.
3. Review and practice Exercises #18a, #18b and #18c.
4. Keep a chart of your practice time.
5. Complete the Creative Corner assignment.

M	TU	W	TH	F	SA	SU
---	----	---	----	---	----	----