

PLAYING THE SOPRANO RECORDER

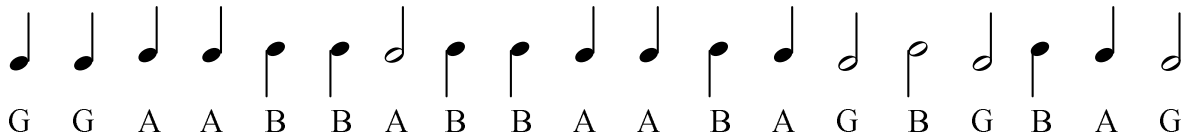
A Soprano Recorder Music Method

LESSON II

TECHNIQUE AND FINGERING

Review the fingerings for “G,” “A,” and “B,” by practicing Exercise #3. In order to tongue clearly, be sure to say “tah” for each note.

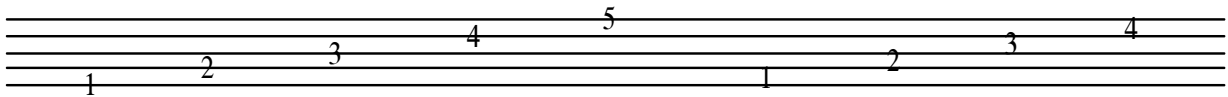
Exercise #3



MUSIC LESSON

The Staff

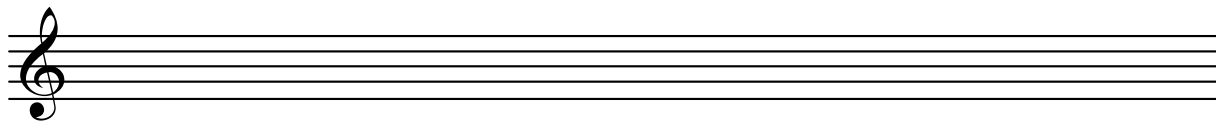
Music notes are placed on a staff. The music staff has five lines and four spaces.



The middle of the note head is placed on a line or space.



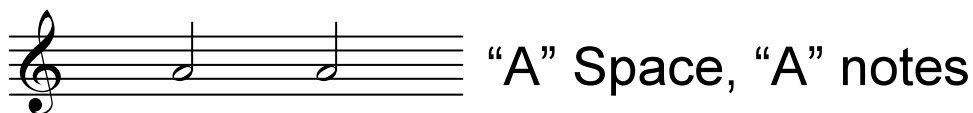
The Treble Clef (G Clef)



When the Treble Clef (G Clef) sign is placed at the beginning of the staff, the second line is named “G.” (Notice how the Treble Clef circles around and ends just passing through the second line from the bottom of the staff). The music notes for soprano recorder are treble clef notes. The music notation for children and women singers, medium to high pitched instruments, the right hand part for all keyboard instruments and Orff instrument parts are also notated on a “treble” staff. You have already learned how to play the second line treble “G” on your recorder in Lesson I.



When placed on the second line of the treble clef staff, these quarter notes become “G” quarter notes.



When placed on the second space of the treble clef staff, these half notes become “A” half notes.



When placed on the third line of the treble clef staff, these quarter and half notes become “B” quarter and half notes.

Reading Music On The Staff

Music notes are placed on the staff in three ways:

**Repeated Notes**

(on the same line)

Steps

(line and space notes that are next to each other)

Skips

(notes that are not steps)

Play the following piece comprised of many repeated notes: Be sure to tongue each note.

Piece of Repeat!

Play the following piece comprised of all steps.

Every Step Counts!

Play the following piece comprised mostly of skips.

Skipping With So Few!


More Music Notes

THE DOTTED HALF NOTE  RECEIVES THREE BEATS

Clap the following rhythm pattern and then play the pattern using the fingering for "G", then "A", and then "B".

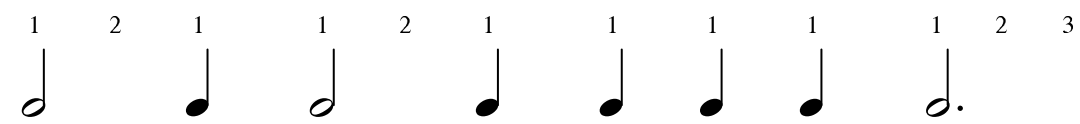
Exercise # 4

1 2 3 1 1 1 1 2 3 1 1 1




tah - ah - a tah tah ta tah - ah - a tah tah ta

1 2 1 1 2 1 1 1 1 1 2 3



tah - ah ta tah - ah ta tah tah ta tah - ah - a

LESSON II PIECESStop and Look


B A G A A B B A G

A B G B G A B G

Waltz

Musical notation for the piece "Waltz". It consists of three staves of music in treble clef. The first staff has notes G, A, B, A, A, B, A, A with corresponding chord letters above. The second staff has notes G, G, A, B with chord letters above. The third staff continues the melody with notes G, A, B, A, B, A, G.

Breathe On Me Breath of God

Words by Edwin Hatch (1835-1889)

Music By Robert Jackson (1842-1914) (1878)

Arr. by LVG

Musical notation for the hymn "Breathe On Me Breath of God". It consists of three staves of music in treble clef. The first staff has notes B, G, B, A with lyrics "Breathe on me, Breath of God, Fill me with" and chord letters above. The second staff has notes A, B with lyrics "life a - new, That I may love what" and chord letters above. The third staff has notes G, B with lyrics "Thou dost love, And do— what Thou would'st do." and chord letters above.

Faith of Our Fathers

Words by Frederick W. Faber

Music by H. F. Hemy
Arr. by LVG

B G B

Faith of our Fa - thers liv - ing still In spite of dun - geon,

G B

fire and sword. O how our hearts beat high with joy

G B A B

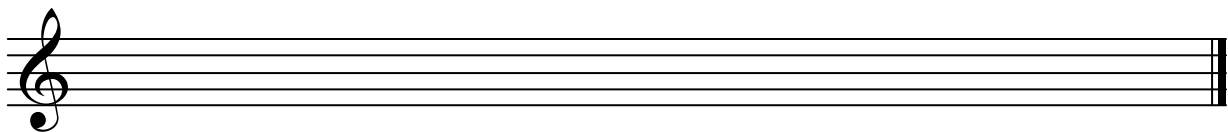
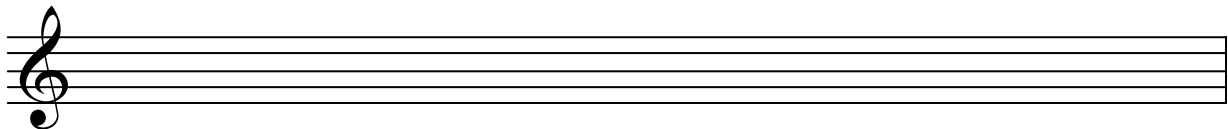
When - e'er we hear that glo - rious word. Faith of our fa - thers!

A B

ho - ly faith! We will be true to thee till death!

CREATIVE CORNER

On the staff provided, write your composition from Lesson I.



THEORY AND TERMS FROM LESSON II

Music Staff — has five lines and four spaces. Music notes are written on the staff.

Step — a space note followed by a line note, or a line note followed by a space note.

Repeated Notes — notes on the same line or space in succession.

Skip — any distance between two notes that is larger than a step. Ex: A line note to the next line note.

Treble Clef — also called “G” Clef. Establishes the second line of the staff as “G,” used in notating notes higher in pitch than “Middle C.”

Notation — (notating, to notate) the writing of music. Notes on the staff indicate pitch. Note values indicate rhythm.

Dotted Half Note receives three beats.

ASSIGNMENT

1. Practice Exercise #3 at least three times each day.
2. Study and practice all the examples in the section “Reading Music on the Staff.”
3. Practice clapping the rhythm of Example #4 each day.
4. Practice Lesson II pieces: *Stop and Look*, *Waltz*, *Breathe On Me* *Breath of God* and *Faith of Our Fathers* three times or more each day.
5. Complete the Creative Corner assignment.
6. Learn and memorize the Theory and Terms of Lesson II.
7. Teach your favorite piece to a family member or friend.
8. Keep a record of how many minutes you practice each day.

M	T	W	TH	F	S	S
---	---	---	----	---	---	---