

399 We have a gentle Shepherd

Christian G Barth (1799-1862)

Composer unknown

arr. John Rodriques (b. 1979)

$\text{♩} = 116$

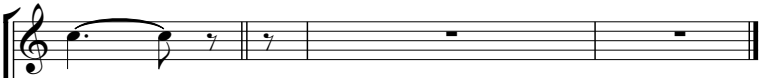
Unison

1. We have a gen - tle
2. That we might find re -
3. And He would dai - ly
4. O Shep - herd kind and

*Introduction for
1st verse only*

Shep - herd who holds us ver - y dear, _____ whose
demp - tion, He took us by the hand, _____ for
guard us, the chil - dren's faith - ful Friend, _____ and
gen - tle, we praise Your sav - ing love. _____ O

love for seek - ing sin - ners drew Him to us so
we were like blind peo - ple a - stray in for - eign
dai - ly send up - on us His bless - ings with - out
keep us safe and lead us to Your blest home a -



near. _____
land. _____
end. _____
bove. _____

To be played after the last verse only

